

FOR LEASE

# PLAZA 205

—ANCHOR OPPORTUNITY—



Plaza 205 is conveniently located at the intersection of Hwy 205 and SE Washington St. With over 440,000 residents within a five-mile radius, Plaza 205 is located in one of Portland's most densely populated areas.

**LOCATION** 10560 SE Washington Street, Portland, Oregon

**AVAILABLE SPACE** 45,099 SF (Divisible)

**RENTAL RATE** Call for details

## COMMENTS

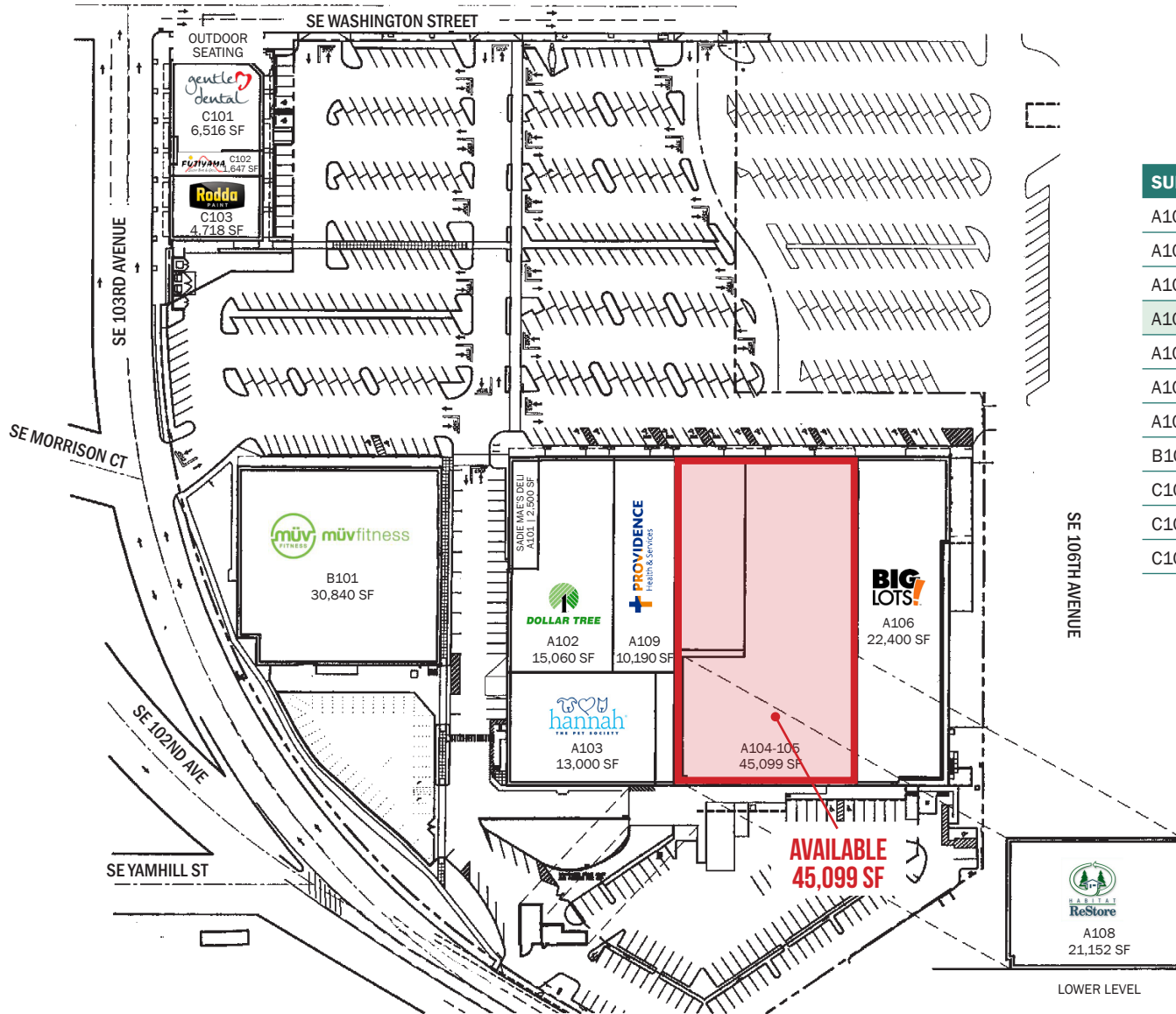
- Located at the border of Portland's east side urban core and adjacent to I-205, there are close to half a million residents who live within 15 minutes of this location.
- Anchored by: Big Lots, Dollar Tree and MUV Fitness.
- 45,099 SF (divisible) anchor box available.
- Generous parking & monument signage available.
- High visibility from SE Washington St (20,730 VPD).



**SARA DALEY** » [sara@cra-nw.com](mailto:sara@cra-nw.com)  
**GARY SURGEON** » [gary@cra-nw.com](mailto:gary@cra-nw.com)  
**503.274.0211**

**Commercial Realty Advisors NW, LLC**  
733 SW Second Avenue, Suite 200  
Portland, Oregon 97204  
[www.cra-nw.com](http://www.cra-nw.com)  
*Licensed brokers in Oregon & Washington*

# PLAZA 205 | SITE PLAN



| SUITE    | TENANT                        | SF     |
|----------|-------------------------------|--------|
| A101     | Sadie Mae's Deli              | 2,500  |
| A102     | Dollar Tree                   | 15,060 |
| A103     | Hannah Pet Society            | 13,000 |
| A104/105 | Available (divisible)         | 45,099 |
| A106     | Big Lots                      | 22,400 |
| A108     | Habitat for Humanity ReStore  | 21,152 |
| A109     | Providence Diagnostic Imaging | 10,190 |
| B101     | Müv Fitness                   | 30,620 |
| C101     | Gentle Dental                 | 6,516  |
| C102     | Fujiyama Sushi Bar            | 1,647  |
| C103     | Rodda Paint                   | 4,718  |





# PLAZA 205 | DEMOGRAPHICS



## 15-MINUTE DRIVE TIME DEMOGRAPHICS

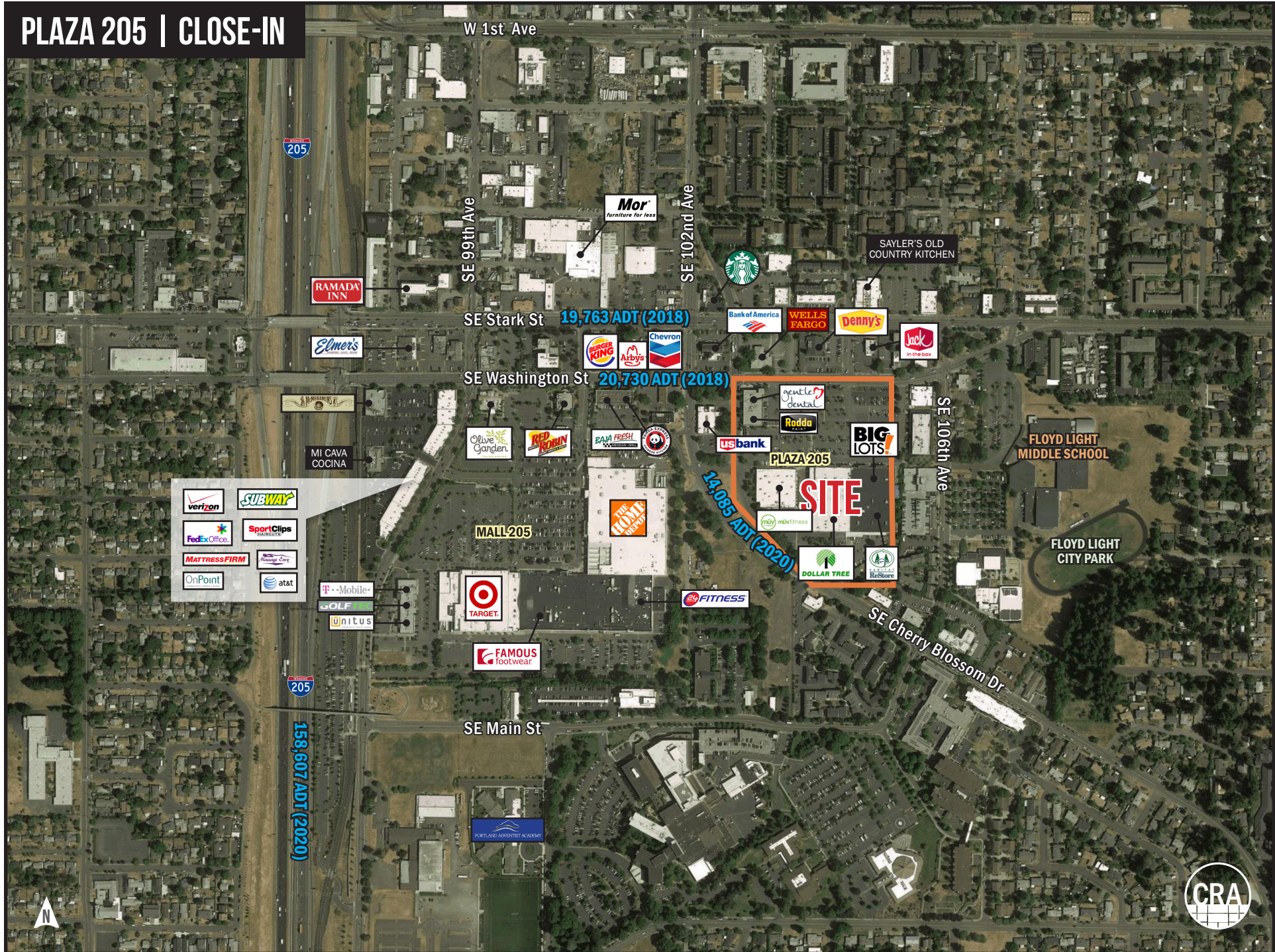
|                              |          |
|------------------------------|----------|
| Estimated population 2021    | 407,472  |
| Number of households         | 166,798  |
| Owner occupied housing units | 88,215   |
| Average household income     | \$85,750 |
| Households over \$75K income | 74,790   |
| College-educated residents   | 205,683  |

Source: Regis - SitesUSA (2021)





# PLAZA 205 | CLOSE-IN





# PORTLAND METRO SHOPPING CENTER ANALYSIS

## 15 MINUTE DRIVE TIMES

